



Crown Land

Crown Land

Town GFW

Town of Grand Falls-Windsor Boundary

Maloney Street

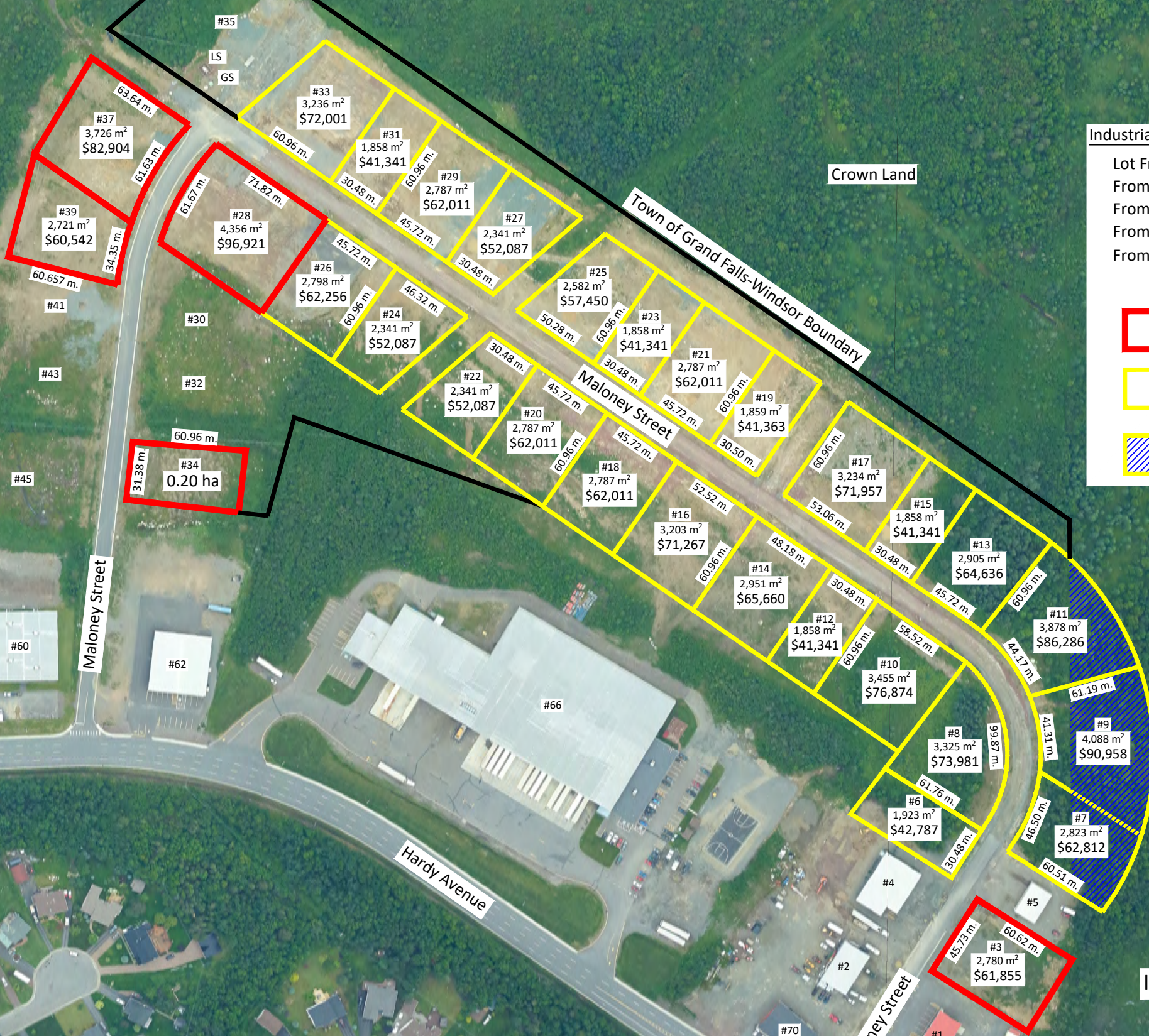
Hardy Avenue

Maloney Street

**Industrial Light Minimum Lot Line Setbacks**

Lot Frontage	30.0 m.
From Front Lot Line	12.0 m.
From Rear Lot Line	6.0 m.
From Interior Side Lot Line	4.5 m.
From Exterior Side Lot Line	6.0 m.

-  Land Readily Available
-  Future Lots
-  Private Property/  
Grenfell Heights



Maloney Street  
Industrial Light Land Development

\$22.25 per sq.m.

Revised: October, 2024  
Aerial Photography 2019